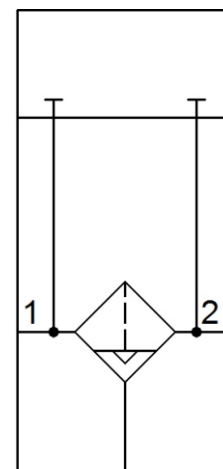




Фильтры MS4-LF-AGB

| Размеры и данные для заказа | | | |
|-----------------------------|---------------|--------------|--------------------------|
| Тип подключения | Вес 1 шт. [г] | № для заказа | Тип |
| Внутренняя резьба G | | | |
| G1/4 | 700 | 527695 | MS4-LF-AGB-C-R-H-EX4 |
| G1/4 | 700 | 527695 | MS4-LF-AGB-C-R-M-EX4 |
| G1/4 | 700 | 527695 | MS4-LF-AGB-C-R-V-EX4 |
| G1/4 | 700 | 527695 | MS4-LF-AGB-C-U-H-EX4 |
| G1/4 | 700 | 527695 | MS4-LF-AGB-C-U-M-EX4 |
| G1/4 | 700 | 527695 | MS4-LF-AGB-C-U-V-EX4 |
| G1/4 | 700 | 527695 | MS4-LF-AGB-E-R-H-EX4 |
| G1/4 | 700 | 527695 | MS4-LF-AGB-E-R-M-EX4 |
| G1/4 | 700 | 527695 | MS4-LF-AGB-E-R-V-EX4 |
| G1/4 | 700 | 527695 | MS4-LF-AGB-E-U-H-EX4 |
| G1/4 | 700 | 527695 | MS4-LF-AGB-E-U-M-EX4 |
| G1/4 | 700 | 527695 | MS4-LF-AGB-E-U-V-EX4 |
| G1/4 | 700 | 527695 | MS4-LF-AGB-C-R-H-WB-EX4 |
| G1/4 | 700 | 527695 | MS4-LF-AGB-C-R-M-WB-EX4 |
| G1/4 | 700 | 527695 | MS4-LF-AGB-C-R-V-WB-EX4 |
| G1/4 | 700 | 527695 | MS4-LF-AGB-C-U-H-WB-EX4 |
| G1/4 | 700 | 527695 | MS4-LF-AGB-C-U-M-WB-EX4 |
| G1/4 | 700 | 527695 | MS4-LF-AGB-C-U-V-WB-EX4 |
| G1/4 | 700 | 527695 | MS4-LF-AGB-E-R-H-WB-EX4 |
| G1/4 | 700 | 527695 | MS4-LF-AGB-E-R-M-WB-EX4 |
| G1/4 | 700 | 527695 | MS4-LF-AGB-E-R-V-WB-EX4 |
| G1/4 | 700 | 527695 | MS4-LF-AGB-E-U-H-WB-EX4 |
| G1/4 | 700 | 527695 | MS4-LF-AGB-E-U-M-WB-EX4 |
| G1/4 | 700 | 527695 | MS4-LF-AGB-E-U-V-WB-EX4 |
| G1/4 | 700 | 527695 | MS4-LF-AGB-C-R-H-WBM-EX4 |
| G1/4 | 700 | 527695 | MS4-LF-AGB-C-R-M-WBM-EX4 |
| G1/4 | 700 | 527695 | MS4-LF-AGB-C-R-V-WBM-EX4 |
| G1/4 | 700 | 527695 | MS4-LF-AGB-C-U-H-WBM-EX4 |
| G1/4 | 700 | 527695 | MS4-LF-AGB-C-U-M-WBM-EX4 |
| G1/4 | 700 | 527695 | MS4-LF-AGB-C-U-V-WBM-EX4 |
| G1/4 | 700 | 527695 | MS4-LF-AGB-E-R-H-WBM-EX4 |
| G1/4 | 700 | 527695 | MS4-LF-AGB-E-R-M-WBM-EX4 |
| G1/4 | 700 | 527695 | MS4-LF-AGB-E-R-V-WBM-EX4 |
| G1/4 | 700 | 527695 | MS4-LF-AGB-E-U-H-WBM-EX4 |
| G1/4 | 700 | 527695 | MS4-LF-AGB-E-U-M-WBM-EX4 |
| G1/4 | 700 | 527695 | MS4-LF-AGB-E-U-V-WBM-EX4 |



Фильтры MS4-LF-AGB

| Размеры и данные для заказа | | | |
|-----------------------------|------------------|---------------|-----------------------------|
| Тип подключения | Вес 1 шт. [г] | № для заказа | Тип |
| Внутренняя резьба G | | | |
| G1/4 | 700 | 527695 | MS4-LF-AGB-C-R-H-WP-EX4 |
| G1/4 | 700 | 527695 | MS4-LF-AGB-C-R-M-WP-EX4 |
| G1/4 | 700 | 527695 | MS4-LF-AGB-C-R-V-WP-EX4 |
| G1/4 | 700 | 527695 | MS4-LF-AGB-C-U-H-WP-EX4 |
| G1/4 | 700 | 527695 | MS4-LF-AGB-C-U-M-WP-EX4 |
| G1/4 | 700 | 527695 | MS4-LF-AGB-C-U-V-WP-EX4 |
| G1/4 | 700 | 527695 | MS4-LF-AGB-E-R-H-WP-EX4 |
| G1/4 | 700 | 527695 | MS4-LF-AGB-E-R-M-WP-EX4 |
| G1/4 | 700 | 527695 | MS4-LF-AGB-E-R-V-WP-EX4 |
| G1/4 | 700 | 527695 | MS4-LF-AGB-E-U-H-WP-EX4 |
| G1/4 | 700 | 527695 | MS4-LF-AGB-E-U-M-WP-EX4 |
| G1/4 | 700 | 527695 | MS4-LF-AGB-E-U-V-WP-EX4 |
| G1/4 | 700 | 527695 | MS4-LF-AGB-C-R-H-EX4-UL1 |
| G1/4 | 700 | 527695 | MS4-LF-AGB-C-R-M-EX4-UL1 |
| G1/4 | 700 | 527695 | MS4-LF-AGB-C-R-V-EX4-UL1 |
| G1/4 | 700 | 527695 | MS4-LF-AGB-C-U-H-EX4-UL1 |
| G1/4 | 700 | 527695 | MS4-LF-AGB-C-U-M-EX4-UL1 |
| G1/4 | 700 | 527695 | MS4-LF-AGB-C-U-V-EX4-UL1 |
| G1/4 | 700 | 527695 | MS4-LF-AGB-E-R-H-EX4-UL1 |
| G1/4 | 700 | 527695 | MS4-LF-AGB-E-R-M-EX4-UL1 |
| G1/4 | 700 | 527695 | MS4-LF-AGB-E-R-V-EX4-UL1 |
| G1/4 | 700 | 527695 | MS4-LF-AGB-E-U-H-EX4-UL1 |
| G1/4 | 700 | 527695 | MS4-LF-AGB-E-U-M-EX4-UL1 |
| G1/4 | 700 | 527695 | MS4-LF-AGB-E-U-V-EX4-UL1 |
| G1/4 | 700 | 527695 | MS4-LF-AGB-C-R-H-WB-EX4-UL1 |
| G1/4 | 700 | 527695 | MS4-LF-AGB-C-R-M-WB-EX4-UL1 |
| G1/4 | 700 | 527695 | MS4-LF-AGB-C-R-V-WB-EX4-UL1 |
| G1/4 | 700 | 527695 | MS4-LF-AGB-C-U-H-WB-EX4-UL1 |
| G1/4 | 700 | 527695 | MS4-LF-AGB-C-U-M-WB-EX4-UL1 |

Фильтры MS4-LF-AGB

| Размеры и данные для заказа | | | |
|-----------------------------|-------------------------|-----------------|-------------------------------------|
| Тип под- ключения | Вес 1 шт. [г] | № для заказа | Тип |
| Внутренняя резьба G | | | |
| G1/4 | 700 | 527695 | MS4-LF-AGB-C-U-V-WB-EX4-UL1 |
| G1/4 | 700 | 527695 | MS4-LF-AGB-E-R-H-WB-EX4-UL1 |
| G1/4 | 700 | 527695 | MS4-LF-AGB-E-R-M-WB-EX4-UL1 |
| G1/4 | 700 | 527695 | MS4-LF-AGB-E-R-V-WB-EX4-UL1 |
| G1/4 | 700 | 527695 | MS4-LF-AGB-E-U-H-WB-EX4-UL1 |
| G1/4 | 700 | 527695 | MS4-LF-AGB-E-U-M-WB-EX4-UL1 |
| G1/4 | 700 | 527695 | MS4-LF-AGB-E-U-V-WB-EX4-UL1 |
| G1/4 | 700 | 527695 | MS4-LF-AGB-C-R-H-WBM-EX4-UL1 |
| G1/4 | 700 | 527695 | MS4-LF-AGB-C-R-M-WBM-EX4-UL1 |
| G1/4 | 700 | 527695 | MS4-LF-AGB-C-R-V-WBM-EX4-UL1 |
| G1/4 | 700 | 527695 | MS4-LF-AGB-C-U-H-WBM-EX4-UL1 |
| G1/4 | 700 | 527695 | MS4-LF-AGB-C-U-M-WBM-EX4-UL1 |
| G1/4 | 700 | 527695 | MS4-LF-AGB-C-U-V-WBM-EX4-UL1 |
| G1/4 | 700 | 527695 | MS4-LF-AGB-E-R-H-WBM-UL1 |
| G1/4 | 700 | 527695 | MS4-LF-AGB-E-R-M-WBM-EX4-UL1 |
| G1/4 | 700 | 527695 | MS4-LF-AGB-E-R-V-WBM-EX4-UL1 |
| G1/4 | 700 | 527695 | MS4-LF-AGB-E-U-H-WBM-EX4-UL1 |
| G1/4 | 700 | 527695 | MS4-LF-AGB-E-U-M-WBM-EX4-UL1 |
| G1/4 | 700 | 527695 | MS4-LF-AGB-E-U-V-WBM-EX4-UL1 |

Технические характеристики:

| | |
|------------------------------|---|
| Отвод конденсата | Полуавтоматический, ручной, автоматический |
| Материал корпус: | Алюминиевое литье |
| Температура окружающей среды | 5 ... 60 °C, -10 ... 60 °C, |
| Рабочее давление | 0 ... 14.0 bar 1.5 ... 12 bar, 2 ... 12 bar |
| Точность фильтрации | 5 Микрон, 40 Микрон |
| Тип крепления | Без крепежной скобы, настенный монтаж сверху и снизу, настенное крепление |
| Кожух стакана | Полимерный стакан с полимерным ожухом, металлический стакан |